

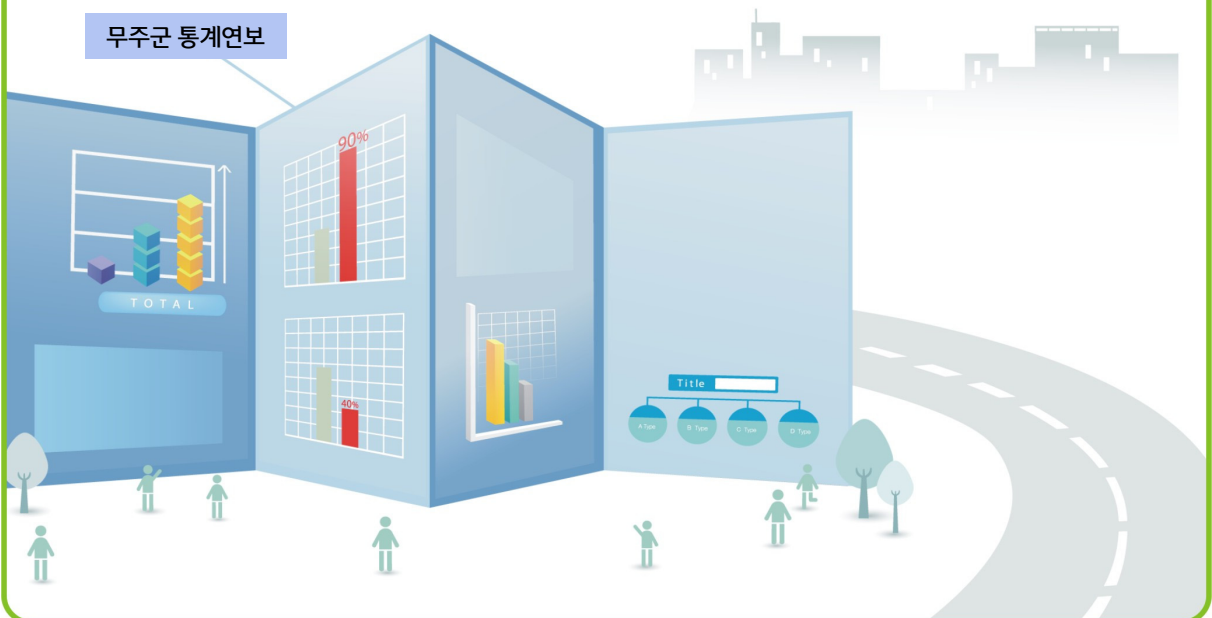
15. 재정

Public Finance



1. 지방세 부담
2. 지방세 징수
3. 예산결산 총괄
4. 일반회계 세입예산 개요
5. 일반회계 세입결산
6. 일반회계 세출예산 개요
7. 일반회계 세출결산
8. 특별회계 예산결산
9. 공유재산

무주군 통계연보



1. 지방세 부담

단위 : 천원, %

연 별	지 방 세 ¹⁾	인 구 (외국인제외)
	Local taxes	Population (excluding foreigners)
2003	11,611,361	26,716
2004	18,975,277	26,183
2005	12,629,229	25,876
2006	13,571,658	25,417
2007	14,569,689	26,361
2008	14,312,420	26,017
2009	14,335,089	25,811
2010	15,379,658	25,578
2011	24,464,900	25,863
2012	16,879,103	25,321
2013	17,083,481	25,393
2014	16,521,572	25,390

주 : 1) 2005년 이전 1인당부담액, 세대당 부담액은 1,000원 단위
 자료 : 재무과 (320-2282)

Local Tax Burden

Unit : 1,000 won, %

1인당 부담액(원)	세 대 (외국인세대제외)	세대당 부담액(원)	Year
Tax burden per capita (won)	Households (excluding foreign household)	Tax burden per household (won)	
435	10,475	1,108	2003
725	10,515	1,805	2004
488,067	10,630	1,188,074	2005
533,960	10,714	1,266,722	2006
552,699	10,902	1,336,424	2007
550,118	11,172	1,281,097	2008
555,387	11,262	1,272,872	2009
601,285	11,402	1,348,856	2010
945,942	11,473	2,132,389	2011
666,605	11,428	1,476,996	2012
672,631	11,570	1,476,532	2013
650,712	11,761	1,404,776	2014

2. 지방세 징수(~2010)

단위 : 천원

연 별	합 계			보 통 세			
	도세 Province taxes Total	시군세 Shi, Gun taxes	계 Total	도세			
				소계 Sub total	취득세 Acquisition	등록세 Registration	
2002	8,580,837	3,731,323	5,109,438	8,376,696	3,541,433	1,863,093	1,657,164
2003	11,611,361	5,357,304	6,008,007	9,324,559	3,624,343	1,938,370	1,662,625
2004	18,975,277	11,809,022	7,002,981	16,598,974	9,921,701	8,352,630	1,543,136
2005	12,629,229	6,369,179	6,260,050	10,574,904	4,717,054	2,970,062	1,722,541
2006	13,571,658	7,024,395	6,547,263	11,146,996	5,096,375	3,206,981	1,861,825
2007	14,336,123	6,028,371	8,307,752	11,774,444	3,951,644	1,979,684	1,940,199
2008	14,312,421	6,275,839	8,036,582	11,571,038	4,120,649	2,089,134	2,001,211
2009	14,335,089	5,884,133	8,450,956	11,737,507	3,804,496	2,190,633	1,581,023
2010	15,379,658	6,313,074	9,066,584	12,827,945	4,104,863	2,005,730	2,061,075

Collection of Local Taxes(~2010)

Unit : 1,000 won

Ordinary Taxes							Year
Province taxes		시.군세 Shi, Gun taxes					
면허세	레저세	소계	주민세	재산세	자동차세	주행세	
License	Leisure	Sub total	Inhabitant	Property	Automobile	Motor fuel	
21,176	-	4,835,263	1,012,998	465,329	641,563	383,424	2002
23,348	-	5,700,216	1,337,914	600,510	630,919	483,104	2003
25,935	-	6,677,273	1,484,923	540,836	642,284	830,087	2004
24,451	-	5,857,850	1,234,617	1,005,900	676,847	1,442,820	2005
27,569	-	6,050,621	1,003,605	1,370,789	770,213	1,283,861	2006
31,761	-	7,822,800	1,085,601	1,533,349	860,760	2,681,420	2007
30,304	-	7,450,389	1,083,854	1,490,691	983,765	2,155,509	2008
32,840	-	7,933,011	983,410	1,618,456	1,108,985	2,464,635	2009
38,058	-	8,723,082	155,352	1,864,898	1,286,782	2,680,402	2010

2. 지방세 징수(~2010)(속)

단위 : 천원

연 별	보 통 세 Ordinary Taxes					목 적 세		
	시.군세 Shi, Gun taxes					계	시.도세	
	중 합 토지세 ¹⁾	지 방 소득세 ²⁾	농 업 소득세	담 배 소비세	도 축세		소 계	지 역 개발세
Synthesis land	Local income	Agriculture income	Tobacco Consumption	Butchery	Total	Sub total	Regional development	
2003	1,021,150	-	-	1,626,517	102	2,040,752	1,732,961	5,727
2004	1,297,995	-	-	1,881,061	87	2,213,029	1,887,321	2,118
2005	-	-	-	1,497,466	200	1,946,804	1,627,212	1,868
2006	-	-	-	1,622,153	-	2,164,178	1,808,809	2,141
2007	665	-	-	1,661,005	-	2,268,631	1,904,545	6,411
2008	-	-	-	1,736,570	-	2,401,571	2,001,205	4,098
2009	-	-	-	1,757,525	-	2,394,950	1,988,200	17,360
2010	4	1,103,954	-	1,631,690	-	2,314,080	2,117,534	7,972

주 1) 종합토지세는 2005년부터 재산세로 통합. 2007,2010년은 미납분징수액.

2) 2010년도 신설

자료 : 재무과 (320-2282)

Collection of Local Taxes(~2010)(cont'd)

Unit : 1,000 won

Objective taxes					과 년 도 수 입			Year
Province taxes		시,군세 Shi, Gun taxes			Revenue from previous year			
공 동 시설세	지 방 교육세	소 계	사업소세	도 시 계획세	계	시도계	시군계	
Public Facilities	Local education	Sub total	Business firm	City Planning	Total	Province total	Shi,Gun total	
193,666	1,533,568	307,791	170,477	137,314	245,990	-	-	2003
193,930	1,691,273	325,708	190,219	135,489	163,214	-	-	2004
234,726	1,390,618	319,592	198,191	121,401	107,521	24,913	82,608	2005
240,791	1,565,877	355,369	218,073	137,296	260,484	119,211	141,273	2006
242,620	1,655,514	364,086	213,076	151,010	293,048	172,182	120,866	2007
259,845	1,737,262	400,366	233,453	166,913	339,812	153,985	185,827	2008
255,619	1,715,221	406,750	240,682	166,068	202,632	91,437	111,195	2009
286,939	1,822,623	196,546	19,653	176,893	237,633	90,677	146,956	2010

2. 지방세 징수¹⁾ (2011~)

단위 : 천원

연 별	합 계	도 세	시군세
	Total	Province taxes	Shi, Gun taxes
2011	24,464,900	15,316,354	9,148,546
2012	16,879,104	7,194,720	9,684,384
2013	170,083,421	7,254,860	9,828,561
2014	16,521,572	7,060,065	9,461,507

주 1) 지방세법 개정('11년1월)에 따른 세목조정으로 서식변경.

자료 : 재무과 (320-2282)

Collection of Local Taxes(2011~)

Unit : 1,000 won

보 통 세 Ordinary Taxes							Year
계	도세 Province taxes						
	소계	취득세	등록 면허세	레저세	지방 소비세		
Total	Sub total	Acquisition		Leisure			
22,096,761	13,061,630	12,753,251	308,379	-	-	2011	
14,385,356	4,833,885	4,552,592	281,293	-	-	2012	
14,743,570	4,950,976	4,590,288	360,688	-	-	2013	
13,968,458	4,603,306	4,215,133	388,173	-	-	2014	

2. 지방세 징수¹⁾ (2011~)(속)

단위 : 천원

연 별	보 통 세 Ordinary Taxes					
	시군세 Si, Gun Taxes					
	소계	주민세	지방소득세	재산세	자동차세	담 배 소비세
	Sub total	Inhabitant				
2011	9,035,131	153,406	1,388,613	2,108,297	3,772,622	1,612,193
2012	9,551,471	170,716	1,437,478	2,421,799	3,849,465	1,672,013
2013	9,792,594	167,486	1,631,167	2,405,357	3,969,387	1,619,197
2014	9,365,152	347,962	1,122,295	2,498,672	3,776,473	1,619,750

주 1) 지방세법 개정('11년1월)에 따른 세목조정으로 서식변경.
 자료 : 재무과 (320-2282)

Collection of Local Taxes(2011~)(cont'd)

Unit : 1,000 won

목적세 Objective Taxes			과년도 수입 Revenue from previous year			Year
계	도세 Province Taxes			도세	시군세	
	지역자원 시설세	지방 교육세		Province taxes	Shi, Gun taxes	
Total						
2,129,442	307,493	1,821,949	238,697	125,282	113,415	2011
2,271,083	341,340	1,929,743	222,665	89,752	132,913	2012
2,246,374	337,565	1,908,809	93,477	57,510	35,967	2013
2,348,709	402,687	1,946,022	204,405	108,050	96,355	2014

3. 예산결산 총괄

단위 : 천원

연 별	예산현액 Budget			세입 Revenue		
	계	일반	특별	계	일반	특별
	Total	General accounts	Special accounts	Total	General accounts	Special accounts
2003	354,394,715	342,833,233	11,561,482	349,886,087	339,191,178	10,694,909
2004	205,758,148	191,171,345	14,586,803	200,900,235	188,639,805	12,260,430
2005	273,598,182	254,762,388	18,835,794	272,114,470	254,581,456	17,533,014
2006	279,833,612	253,776,190	26,057,422	281,161,004	256,231,222	24,929,782
2007	250,549,632	219,673,594	30,876,038	252,646,679	222,159,637	30,487,042
2008	309,610,157	249,133,375	60,476,782	312,672,795	253,327,355	59,345,440
2009	335,507,630	282,723,585	52,784,045	339,470,834	287,727,338	51,743,496
2010	303,749,584	271,859,898	31,889,686	308,739,404	276,665,910	32,073,494
2011	303,770,883	273,670,298	30,100,585	308,664,174	278,203,431	30,460,743
2012	342,367,401	309,808,204	32,559,197	345,621,735	313,160,590	32,461,145
2013	369,509,559	316,896,528	52,613,031	368,982,516	316,018,552	52,963,964
2014	367,814,242	298,708,252	69,105,990	367,764,440	298,791,679	68,972,761

자료 : 재무과 (320-2276)

Summary of Budget and Settlement

Unit : 1,000 won

세 출 Expenditure			잉 여 Surplus			Year
계	일반	특별	계	일반	특별	
Total	General accounts	Special accounts	Total	General accounts	Special accounts	
265,467,419	259,786,035	5,681,384	84,418,668	79,405,143	5,013,525	2003
132,695,111	128,643,046	4,052,065	68,205,121	59,996,757	8,208,364	2004
144,020,857	139,522,287	4,498,570	128,093,613	115,059,169	13,034,444	2005
210,460,419	199,051,882	11,408,537	70,700,584	57,179,339	13,521,245	2006
168,061,836	154,700,643	13,361,193	84,584,842	67,458,994	17,125,848	2007
204,722,469	174,211,665	30,510,804	107,950,326	79,115,690	28,834,636	2008
259,780,391	224,092,888	35,687,503	79,690,443	63,634,450	16,055,993	2009
238,119,803	218,847,253	19,272,550	70,619,601	57,818,657	12,800,944	2010
233,375,143	214,636,401	18,738,742	75,289,032	63,567,030	11,722,002	2011
249,998,463	234,238,203	15,760,260	95,623,272	78,922,387	16,700,885	2012
279,070,076	253,554,607	25,515,469	89,912,440	62,463,945	27,448,495	2013
268,113,575	235,330,617	32,782,958	99,650,865	63,461,062	36,189,803	2014

4. 일반회계 세입예산 개요¹⁾

단위 : 천원

연 별	합계 Total	지방세 Local tax	세 외 수 입		
			경 상 적 세 외 수 입		재 산 임 대 수 입 Property rents
2003	141,143,313	5,912,080	25,968,240	8,649,222	75,847
2004	116,819,574	7,130,925	17,931,001	7,332,101	88,226
2005	204,377,777	6,214,865	16,814,391	5,528,541	60,671
2006	153,225,099	6,084,060	18,727,965	5,608,966	79,884
2007	176,433,857	7,279,492	13,516,952	5,013,291	62,419
2008	203,102,303	7,404,746	17,954,999	6,242,135	151,712
2009	221,439,124	8,007,836	29,043,148	6,602,189	195,339
2010	227,122,823	8,637,046	29,081,071	6,183,897	136,591
2011	235,157,001	8,895,022	27,194,026	6,012,336	156,280
2012	262,435,111	9,182,606	24,615,024	6,536,411	224,644
2013	265,050,105	9,351,788	38,321,671	7,192,198	298,953
2014	258,793,880	8,848,164	13,813,507	6,450,967	314,509

주 : 1) 최종예산액임
 자료 : 재무과 (320-2294)

Budget Revenues of General Accounts

Unit : 1,000 won

Non-tax revenues					Year
Current non-tax revenues					
사용료수입	수수료수입	사업장수입	징수교부금	이자수입	
Rents	Fees	Business product	Collection grants	Interest	
217,429	1,914,476	-	181,160	6,260,310	2003
229,013	2,283,201	-	1,840,822	2,890,839	2004
239,571	2,198,347	-	221,681	2,808,271	2005
251,449	2,156,026	-	398,979	2,722,628	2006
515,953	1,952,270	-	222,529	2,260,120	2007
498,016	2,016,353	112,009	206,422	3,257,623	2008
604,184	414,981	1,945,296	227,389	3,215,000	2009
835,892	568,650	2,069,987	262,475	2,310,302	2010
1,234,859	412,760	1,982,146	456,988	1,769,303	2011
1,000,955	472,821	2,237,925	262,510	2,337,556	2012
1,632,938	470,462	2,465,078	244,967	2,079,800	2013
1,454,043	467,028	2,750,605	221,782	1,243,000	2014

Note : 1) Final budget

4. 일반회계 세입예산 개요¹⁾ (속)

단위 : 천원

연 별	세 외 수 입 Non-tax revenue					지방 교부세	조정 교부금	재정 보전금
	임 시 적 세 외 수 입 Temporary non-tax revenues							
	재산매각 수 입 Property disposal	부담금 Allotment	잡수입 Miscellaneous	지난년도 수 입 Revenue from previous year				
2003	3,646,331	998,025	1,500,000	1,125,644	22,662	55,519,700	-	1,280,800
2004	1,584,307	199,878	811,000	528,129	45,300	55,851,000	-	1,909,400
2005	1,367,422	93,429	500,000	757,493	16,500	73,727,819	-	2,269,300
2006	614,998	10,604	-	574,394	30,000	74,829,374	-	2,532,001
2007	148,661	-	-	146,141	2,520	83,339,000	-	2,000,000
2008	645,216	73,541	208	526,335	45,132	117,664,922	-	2,044,000
2009	724,730	250,696	50,000	420,674	3,360	101,283,551	-	2,641,910
2010	2,970,574	921,449	1,257,600	639,525	152,000	102,574,365	-	2,525,700
2011	1,839,715	86,737	896,481	739,093	117,404	113,646,971	-	3,416,909
2012	1,884,676	55,734	1,022,000	725,538	81,404	128,535,373	-	4,570,202
2013	4,053,510	-	1,088,968	2,893,542	71,000	128,467,008	-	4,852,460
2014	7,632,540	31,153	670,000	6,591,387	70,000	132,114,463	-	5,132,955

주 : 1) 최종예산액임
 자료 : 재무과 (320-2294)

Budget Revenues of General Accounts(Cont'd)

Unit : 1,000 won

보조금 Sub-sidies	지방채 Local borrowing	보전수입 등 및 내부거래 Conservation revenues and Internal transaction						Year	
		보전수입등 Conservation revenues			내부거래 Internal transaction				
		순세계 잉여금 Net surplus	이월금 Carry over	융자금 수입 Loan collection	전입금 Transferred from	예탁금및 예수금 Contribution			
42,316,010	-	9,945,388	9,721,534	223,854	-	3,727,299	3,727,299	-	2003
25,710,943	-	8,517,854	7,301,984	1,215,870	-	496,739	496,739	-	2004
105,351,402	-	9,612,146	8,658,810	953,336	-	306,282	306,282	-	2005
51,051,699	-	12,504,001	11,064,143	1,439,858	-	-	-	-	2006
48,051,059	-	8,055,000	8,055,000	-	-	300,000	300,000	-	2007
58,033,636	-	10,740,964	10,057,118	633,846	50,000	326,684	326,684	-	2008
80,462,679	-	17,831,229	16,394,536	1,436,693	-	3,885,000	3,885,000	-	2009
84,304,641	-	18,897,377	14,345,170	4,552,207	-	1,029,223	1,029,223	-	2010
82,004,073	-	19,305,359	17,189,354	2,116,005	-	36,616	36,616	-	2011
95,531,906	-	16,193,937	14,919,831	1,274,106	-	-	-	-	2012
84,057,178	-	27,075,963	25,734,394	1,341,569	-	-	-	-	2013
76,335,219	-	22,549,572	20,800,843	1,748,729	-	-	-	-	2014

Note : 1) Final budget

5. 일반회계 세입결산

단위 : 천원

연 별 과목별	예 산 현 액 Budget	
	금 액	구 성 비 (%)
	Amount	Percent distribution
2007	219,673,594	100.00
2008	249,133,375	100.00
2009	282,723,585	100.00
2010	271,859,898	100.00
2011	273,670,297	100.00
2012	309,808,204	100.00
2013	316,896,528	100.00
2014	298,708,252	100.00
지방세	8,848,164	2.96
세외수입	13,813,507	4.62
지방교부세	132,114,463	44.23
조정교부금	5,132,955	1.72
보조금	76,335,219	25.56
지방채	-	-
보전수입등 내부거래	62,463,944	20.91

Settled Revenues of General Accounts

Unit : 1,000won

결 산 Settlement		예산대 결산비율(%) Budget / settlement ratio	Year & Item
금 액 Amount	구성비(%) Percent distribution		
222,159,637	100.00	98.88	2007
253,327,355	100.00	98.34	2008
287,727,338	100.00	98.26	2009
276,665,910	100.00	98.26	2010
278,203,430	100.00	98.37	2011
313,160,590	100.00	101.08	2012
316,018,552	100.00	99.70	2013
298,791,679	100.00	100.03	2014
9,461,507	3.17	93.52	Local tax
14,265,137	4.77	96.83	Non-tax revenue
132,647,708	44.39	99.60	Local share tax
5,010,109	1.68	102.45	Subsidies
74,943,273	25.08	101.86	Local transfers
-	-	-	Local borrowing
62,463,945	20.91	100.00	Local loan

6. 일반회계 세출예산 개요¹⁾(~2007)

단위 : 천원

연 별	합계	일반행정비	사회개발비
	Total	General administration	Social development
2003	141,143,313	27,623,492	43,123,011
2004	116,819,574	30,495,036	43,637,961
2005	204,377,777	30,095,731	54,328,017
2006	153,225,099	32,859,255	70,783,080
2007	176,433,857	36,651,277	74,966,233

주 : 1) 최종예산액 2007년까지만 작성, 2008년부터는 일반회계 세출예산개요(속)에 작성
 자료 : 기획관리실 (320-2215)

Budget Expenditure of General Accounts(~2007)

Unit : 1,000 won

경제개발비	민방위비	지원 및 기타경비	Year
Economic development	Civil defence	Support and others	
67,148,087	430,535	2,818,188	2003
38,096,261	376,435	4,213,881	2004
116,377,954	307,787	3,268,288	2005
42,319,213	215,135	7,048,416	2006
59,895,446	223,115	4,697,786	2007

Note : 1) Final budget

6. 일반회계 세출예산 개요(속)¹⁾(2008~)

단위 : 백만원

연 별	합계	일 반 공공행정	공공질서 및 안 전	교 육	문화 및 관 광	환경보호	사회복지
	Total	General public Administration	Public order, Safety	Education	Culture, Tourism	Protection of Environment	Social Welfare
2008	203,102	11,393	4,706	2,521	28,511	14,468	22,730
2009	221,439	12,891	3,747	2,525	22,411	12,250	29,568
2010	227,123	10,409	4,381	2,457	26,381	14,411	26,179
2011	235,157	11,335	1,934	2,913	29,791	15,052	27,547
2012	262,425	13,191	7,032	3,445	23,531	17,903	31,214
2013	265,050	15,235	2,765	2,968	26,220	19,611	31,872
2014	258,793	15,314	2,546	3,268	19,729	14,534	35,683

주 : 1) 최종예산액. 2008년 항목변경

자료 : 재무과 (320-2276)

Budget Expenditure of General Accounts(Cont'd)¹⁾(2008~)

Unit : Million won

보 건	농 림 해양수산	산 업, 중소기업	수송 및 교 통	국 토 및 지역개발	과학기술	예비비	기 타	Year
Health	Agriculture, Forestry, Ocean, Marine	Industry, Small and medium enterprises	Transportation, Traffic	Country, Region Development	Science Technology	Contingency	Other	
3,485	39,547	7,344	5,618	30,061	-	4,381	28,337	2008
4,216	50,341	3,307	13,477	32,980	-	4,429	29,297	2009
5,137	63,220	4,923	8,380	23,657	-	4,043	33,545	2010
4,621	58,845	2,269	12,418	30,237	-	6,218	31,977	2011
4,989	59,582	2,877	7,700	40,193	-	17,746	33,022	2012
4,544	61,675	4,376	15,138	34,717	-	11,475	34,454	2013
6,751	62,166	3,514	12,799	24,421	-	18,529	39,539	2014

Note : 1) Final budget

7. 일반회계 세출결산¹⁾ (~2007)

단위 : 천원

연 별 과목별	예산현액 Budget	
	금 액	구성비(%)
	Amount	Percent distribution
2003	342,833,233	100.00
2004	191,171,345	100.00
2005	254,762,388	100.00
2006	253,776,190	100.00
2007	219,673,594	100.00
일반행정비	36,538,053	16.63
사회개발비	98,062,976	44.64
경제개발비	80,256,664	36.53
민방위비	223,115	0.10
지원 및 기타경비	4,592,786	2.09

주 : 1) 2007년까지만 작성, 2008년부터는 일반회계 세출결산(속)에 작성
 자료 : 재무과 (320-2276)

Settled Expenditure of General Accounts¹⁾ (~2007)

Unit : 1,000won

결 산 Settlement		예산대 결산비율(%)	Year & Item
금 액	구성비(%)		
Amount	Percent distribution	Budget / settlement ratio	
259,786,035	100.00	131.97	2003
128,643,047	100.00	148.61	2004
139,522,287	100.00	182.60	2005
199,051,882	100.00	127.49	2006
154,700,643	100.00	142.00	2007
34,712,798	22.44	105.26	General administration
63,868,337	41.29	153.54	Social development
52,974,250	34.24	151.50	Economic development
171,772	0.11	129.89	Civil defence
2,973,486	1.92	154.46	Support and others

7. 일반회계 세출결산(속)¹⁾ (2008~)

단위 : 백만원

연 별 과목별	예 산 현 액 Budget	
	금 액	구성비(%)
	Amount	Percent distribution
2008	249,133	100.00
2009	282,724	100.00
2010	271,860	100.00
2011	273,671	100.00
2012	309,808	100.00
2013	316,897	100.00
2014	298,708	100
일반공공행정	15,576	5.2
공공질서 및 안전	3,234	1.1
교육	3,268	1.1
문화 및 관광	29,972	10.0
환경보호	14,947	5.0
사회복지	35,754	12.0
보건	6,751	2.3
농림해양수산	75,299	25.2
산업,중소기업	3,514	1.2
수송 및 교통	16,241	5.4
국토 및 지역개발	36,798	12.3
과학기술	-	0.0
예비비	17,815	6.0
기 타	39,539	13.2

주 : 1) 2008년도부터 서식변경
 자료 : 재무과 (320-2276)

Settled Expenditure of General Accounts(Cont'd)¹⁾ (2008~)

Unit : Million won

결 산 Settlement		예산대 결산비율(%) Budget / settlement ratio	Year & Item
금 액 Amount	구성비(%) Percent distribution		
174,211	100.00	143.01	2008
224,093	100.00	126.16	2009
218,847	100.00	124.22	2010
214,636	100.00	127.50	2011
234,238	100.00	75.61	2012
253,555	100.00	80.01	2013
235,331	100	78.78	2014
14,452	6.1	92.8	General public Administration
2,987	1.3	92.4	Public order, Safety
3,091	1.3	94.6	Education
21,622	9.2	72.1	Culture, Tourism
14,325	6.1	95.8	Protection of Environment
33,846	14.4	94.7	Social Welfare
5,010	2.1	74.2	Health
59,232	25.2	78.7	Agriculture, Forestry, Ocean, Marine
3,362	1.4	95.7	Industry, Small and medium enterprises
11,852	5.0	73.0	Transportation, Traffic
27,366	11.6	74.4	Country, Region Development
-	0.0	0.0	Science Technology
-	0.0	0.0	Contingency
38,186	16.2	96.6	Other

8. 특별회계 예산결산

단위 : 천원

연 별 회계별	회계수 Accounts	예 산 액 Budget
2004	8	12,124,205
2005	8	12,385,900
2006	7	26,057,422
2007	8	30,776,342
2008	9	38,365,329
2009	9	52,784,045
2010	9	31,889,686
2011	9	30,100,585
2012	8	32,559,197
2013	8	52,613,031
2014	9	69,105,990
상 수 도		11,697,777
수 질 개 선		30,910,145
의 료 보 호 기 금		351,989
농 어 촌 소 득 지 원		2,816,083
발전소주변지역지원사업		1,118,818
농공지구조성및 관리사업		6,708,564
경 영 수 익 사 업		8,743,588
기 반 시 설 특 별 회 계		26
에코빌리지조성특별회계		6,759,000

자료 : 재무과 (320-2276)

Settled Budget of Special Accounts

Unit : 1,000 won

세 입 Revenue	세 출 Expenditure	Year & Accounting
12,260,430	4,052,066	2004
17,533,016	4,498,570	2005
24,929,782	11,408,536	2006
30,380,557	13,321,245	2007
59,345,439	30,510,803	2008
51,743,496	35,687,502	2009
32,073,494	19,272,551	2010
30,460,743	18,738,742	2011
32,461,846	15,760,260	2012
52,963,964	25,515,469	2013
68,972,761	32,782,957	2014
11,750,819	4,411,400	상 수 도
31,048,014	16,915,111	수 질 개 선
359,774	337,473	의 료 보 호 기 금
2,734,039	2,065,768	농 어 촌 소 득 지 원
1,107,504	754,880	발전소주변지역지원사업
6,711,984	416,610	농공지구조성및 관리사업
8,495,793	7,675,015	경 영 수 익 사 업
26	-	기 반 시 설 특 별 회 계
6,764,808	206,700	에코빌리지조성특별회계

9. 공유재산

단위 : m², 천원

연 별	총평가액	토 지		건 물	
		Land		Building	
	Total	면적(m ²) Area	평가액 Appraisal value	면적(m ²) Area	평가액 Appraisal value
2003	57,652,793	37,763,000	50,398,087	40,092	7,019,557
2004	62,051,305	38,318,000	54,859,331	39,814	6,956,825
2005	66,870,348	38,972,000	59,678,374	39,814	6,956,825
2006	82,103,336	39,390,000	67,214,699	42,460	14,653,488
2007	157,918,829	52,011,651	121,991,993	202,950	33,744,029
2008	809,214,692	52,590,035	132,130,657	228,802	87,381,335
2009	986,910,111	41,515,076	155,879,086	108,115	126,338,502
2010	971,546,576	41,761,528	164,597,089	108,148	127,709,414
2011	984,651,376	41,971,073	174,759,219	116,123	134,889,061
2012	1,113,971,105	41,854,356	174,070,635	128,596	158,974,031
2013	1,193,742,502	41,893,493	176,183,304	144,239	184,163,010
2014	1,236,535,013	41,978,687	176,613,709	161,562	189,468,019

Public Properties Commonly Owned

Unit : m², 1000 won

입목 . 죽 Standing tree & bamboo		공작물 Construction		기 타 Others		Year
주 Trees	평가액 Appraisal value	점 Piece	평가액 Appraisal value	수량(건) Quantity	평가액 Appraisal value	
113,700	116,881	-	-	180	118,268	2003
113,700	116,881	-	-	180	118,268	2004
113,700	116,881	-	-	180	118,268	2005
113,700	116,881	-	-	180	118,881	2006
113,700	116,881	-	-	61	2,065,926	2007
165,584	3,920,608	4,752	582,276,787	838	3,505,305	2008
126,072	3,482,312	6,739,572	697,957,028	268	3,253,183	2009
296,956	3,715,397	12,081	673,581,261	81	1,943,415	2010
350,911	6,642,076	20,991	664,435,227	360,518	3,925,790	2011
464,322	9,009,099	25,958	767,991,550	360,518	3,925,790	2012
486,991	10,173,993	28,821	817,835,875	360,519	5,386,320	2013
503,621	11,182,435	30,855	853,598,649	360,632	5,672,199	2014